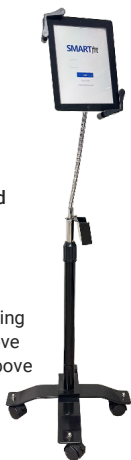


For Individual, Group, or Team Training

TV supplied by customer.  
Instructions included to connect with SMARTfit Controller



Apple iOS or Android Tablet supplied by customer.

Minimum Tablet Requirements:

- iOS/Apple: Operating System: 9.3 and above
- Android: 4.4 and above (5.0 and above recommended)
- Connectivity: Wi-Fi, Bluetooth 4.0

**Hardware:** One controller, one interactive station made up of two joined 46" x 46" panels that mount to a wall; 9 computerized targets with sensors, multifunctional LED displays, and pre-loaded firmware; tablet stand; CE Certification.

**Accessories:** One pair of rubber-tipped drumsticks, one pair of foam noodles, and one two-pound bouncing medicine ball included.

**Software & License:** Most recent version of SMARTfit app included, to be uploaded to iOS or Android Tablet, which is not included. App can also be uploaded to unlimited user smartphones. Minimum one year SMARTfit Annual License required- G, P, or R. Purchase five years for a lifetime license.

SMARTfit Single Trainers are not upgradeable to ProTrainers or MultiTrainers.

**Annual License Options:**

- SMARTfit Model G Annual License - Games Only (Mini, Trainer, ProTrainer)
- SMARTfit Model P Annual License - Performance, Wellness, and Fitness (Mini, Trainer, ProTrainer)
- SMARTfit Model R Annual License - Rehab (Mini)

**User Manual and Installation Instructions:** ([link](#))

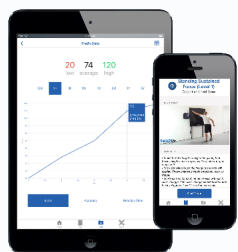
**Site Survey:** Be sure to [complete this site survey](#), especially for on-wall installations, and share it with your SMARTfit representative to ensure nothing is missed.

**Software Options:** [See full controller software license explained](#)

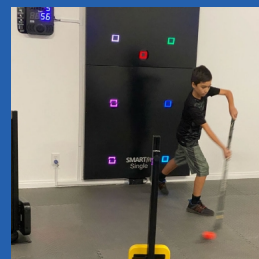
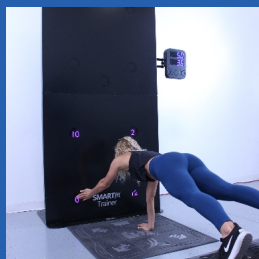
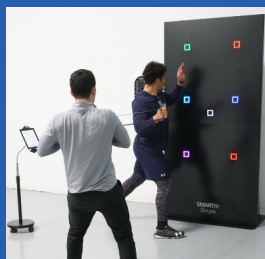
**Purchasing Guide:** ([link](#))

**SMARTfit iOS/Android App User Interface**

Our iOS/Android app, available for download on both the App Store and Google Play, provide the tools to customize and tailor programming to any level and supplying the data to measure and track progress.



18-month warranty (extended warranty available) and SMARTfit's exclusive Platinum Service Plan



Follow Us:



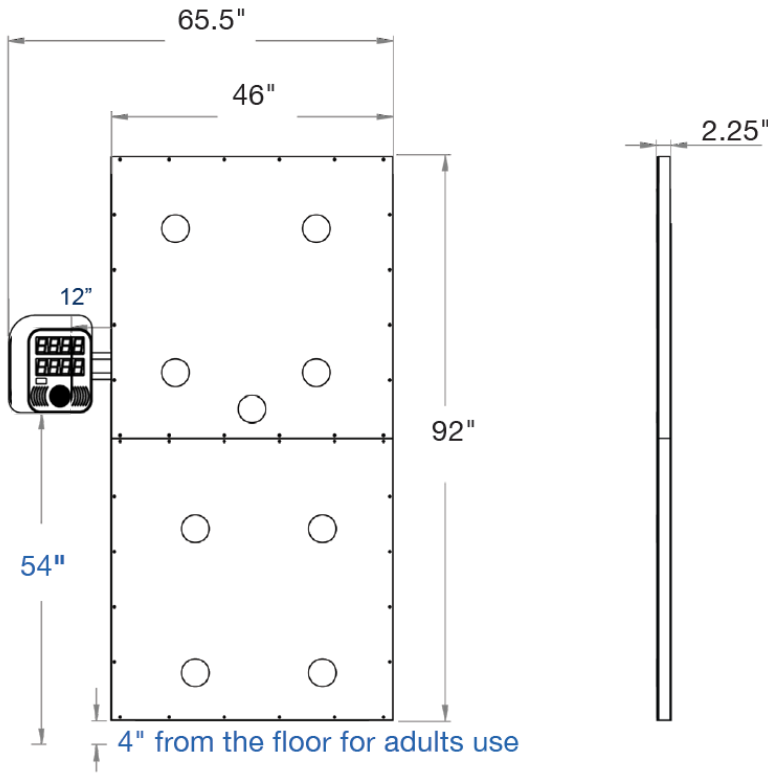
1-800-900-8542

[www.smartfitinc.com/fitness](http://www.smartfitinc.com/fitness)

# SMARTfit<sup>®</sup> TRAINER

## TRAINER ON WALL SPECS

SKU | BLACK: 1-30210



	Portable	CPU
Width:	65.5" (166.37 cm)	10" (25.4 cm)
Height:	92.5" (234.95 cm)	12.5" (31.75 cm)
Depth:	2.25" (57.1 cm)	2.6" (6.60 cm)
Weight:	140-lbs (63.50 kg)	5-lbs (2.27 kg)

System power requirements:  
100-240VAC/50-60HZ/3Amp,  
receptacle

**Concrete Wall**

**Note: The system can be installed directly on a concrete wall.**

**Stud Wall**

**Note: Stud walls will require a 3/4-inch (19.05mm) sheet of Sanded plywood.**

**Plywood must be 47" (119.38cm) wide x 93" (236.22cm) high**

Option to paint plywood the same color of wall

**Functional Playing Space:** The playing space required will depend on your specific product and programming plans - individual, small group, large group, ball play, Strike Pod placement, etc. Ask your SMARTfit representative if you have questions.

### Add SMARTfit Strike Pods to create a 360-degree training environment

Stands are recommended

#### SMARTfit Strike Pods - 1-80010

- Each Pod comes with a Mounting Plate, Rack Strap, & Power Bank
- Capable of adding up to 15 pods
- Available colors: yellow, red, blue, black, green



#### Charging Cradle 1-80017



Required with purchase of a Strike Pod. Charges up to 6 power banks

#### Spare Power Bank 1-80016



#### Group Training Wristbands (5-pk)



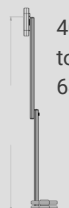
#### Drumsticks (pair) 2-60202



#### 68" (1727.2 mm) Adjustable Stand - 1-80110

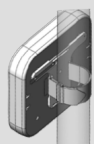
- Stand: 22-lbs (9.98 kg)
- (1) 22-lb (9.98 kg) rubber coated weights

40" (1016 mm) to 68" (1727.2 mm)



#### 45" (1066.8 mm) Portable Stand - 1-80450

- Pole - 1.5-lb (0.68kg)
- 10-lb (4.53 kg) removable base



Follow Us:



1-800-900-8542

[www.smartfitinc.com/fitness](http://www.smartfitinc.com/fitness)

[www.smartfitinc.com/rehab](http://www.smartfitinc.com/rehab)